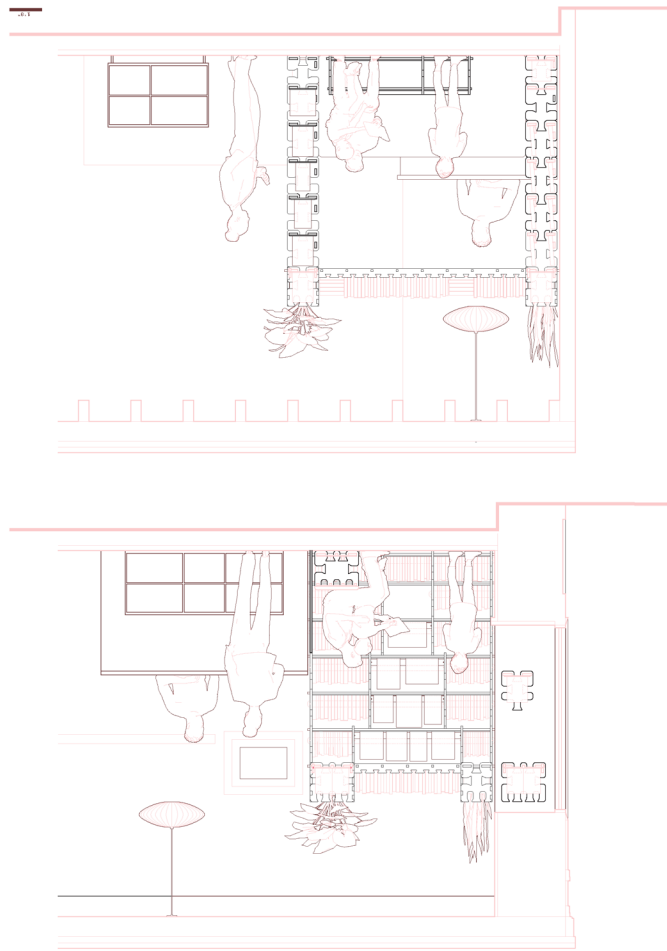


cultivating in a castle of curiosity and creativity

PUZZLE FORTRESS



Andrew Colapreso
Taylor & Co. Books
Kensington, Brooklyn



0C

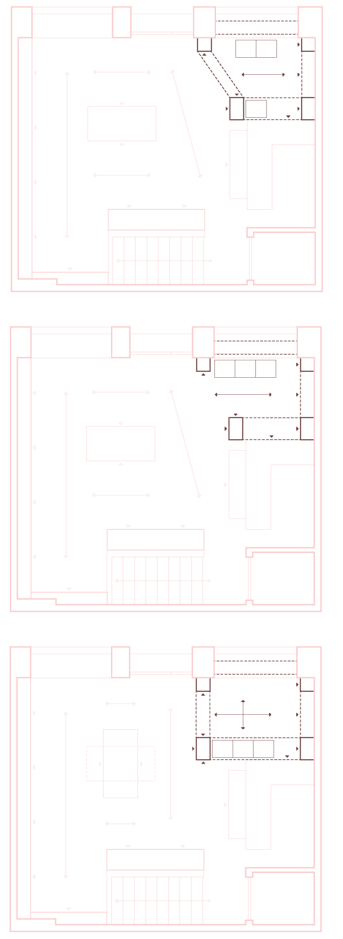
synthesizes the previous two options, with the battlement of the entrance skewed to frame the reading nook effectively.

0B

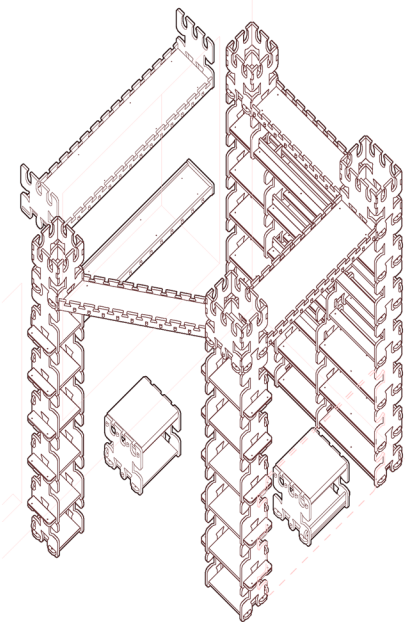
proposes shortening the segment near the counter and extending the ventilation offers a more open design, transitioning smoothly to the rest of the space.

0A

envisions entering through a defined reading section through a defined threshold and lounging in an enclosed fortress-like space. All shelves and walls would be orthogonal to maximize storage and display capacity.



The Puzzle Fortress at Taylor & Co. Books in Kensington, Brooklyn is a furniture and display shelving unit that engages children with simple materials, encouraging them to explore how different elements of the world around them interconnect and come together.



The castle-like configuration of the modular shelves creates a unique environment that transports young readers into a grand realm of literary adventures. The four turret shelves, connected by battlements, enclose a semi-private space, inviting children to enter through a threshold that fortifies their imagination.

The varied tectonic systems create a flexible array of shelves that can accommodate different uses, from highlighting newer publications with front-facing displays to offering windowed battlements for public display.

